

Slovic Sensei...



Prof. Slovic is a long-time resident of Toyota City, having lived here for almost 30 years. He teaches English and Contemporary Art At Aichi Gakusen University. He often helps the Toyota City Office with making English language materials to introduce the City and Japanese culture to visitors from abroad.

About the "Mingei-kan" (Japanese Folk Craft Center)

As one of many facilities operated and maintained by Toyota City, the Mingei-kan is unique, as it can be fully enjoyed by both foreign visitors and Japanese people alike. The Folk-Craft Center is composed of a complex of exhibition halls, a lovely tea-ceremony room, and a very unusual working "nobori gama," an ancient type of pottery kiln. Visitors can make pottery at the Center and also see an exhibition of ancient ceramic artifacts found in this area. Changing exhibitions in the halls allow visitors to experience the richness of traditional Japanese crafts, architecture, and home furnishings, such as "kaidan-dansu" ("staircase bureau"). The Craft Center is located in a magnificent park setting, where one can enjoy the special atmosphere of each of the four seasons, either by strolling through the park or while enjoying a bowl of Japanese green tea.

Location

〒470-0331 86-100 Haiwa Hiratobashi-cho Toyota city
Tel: 0565-45-4039 Fax: 46-2588

☐ Open: 9:00a.m~5:00p.m (No admission after 4:30)

☐ Closed: Mondays and New Year's holidays,

☐ Admission: Free

Charges apply for special exhibitions

☐ You can enjoy a bowl of Macha green tea for ¥300 at Kanoutei, which is open every Saturday and Sunday. During the cherry blossom season tea is served every day of the week.

☐ Transportation

By train: 15 min. walk from Hiratobashi Stn. on Meitetsu Mikawa Line

By car: from Nagoya

5 min. from Sanage Green Road, Shidare Interchange.

30 min. along route 153, going towards Kanpachikyo.

By train

Meitetsu Mikawa Line, bound for Sanage (Return, bound for Chiryu) Toyotashi Stn.→Hiratobashi Stn.(7 minutes)

Fee: Adult ¥220 Child ¥110

Train leaves every 15 minutes.



1 Exit Hiratobashi Station

2 Go straight, You will see a parking lot on your left and a town map on your right

3 At the first street light, cross the road and turn left.

4 Go straight on your right you will see a sign board

5 Walk past the sign board (Hiratobashi Recreational Park) On your left, you will see a second sign board. Turn right at that sign board

6 Go straight to the Mingeikan. It will be on your right.



Walking Map from Hiratobashi Stn. to Toyota Mingei-kan.

Please see numbered landmark photos and walking instructions above, which correspond to the numbers on the map.

ENJOY TOYOTA Travelers' Guide

Toyota City Folk Craft Museum



Take your time in a quiet atmosphere enjoying traditional Japanese folk crafts.

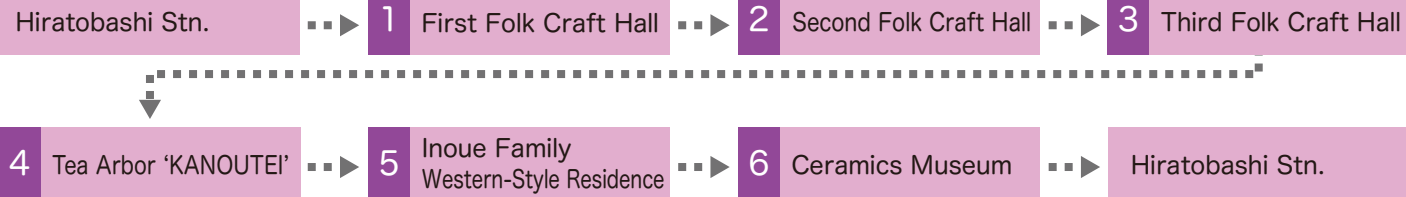
This museum invites you to learn the basic ideas of how the Japanese have been leading their daily lives by making the most of their skillfulness in the craft arts. You can also enjoy strolling through abundant nature, which provides a change of scenery in every season, cherry blossoms in spring and colored leaves in autumn are beyond description.

Production: Toyota City / TIA

Co-editor : TIA volunteer group E-IFF

Toyota International Association (TIA)
Toyota Industry and Culture Center, 3rd Floor
1-25 Kozakahonmachi, Toyota City, Aichi Prefecture
TEL: 0565-33-5931 FAX: 0565-33-5950 e-mail: tia@hm.aitai.ne.jp

Toyota City Folk Craft Museum Half- day Walking Course (3hours)



1 First Folk Craft Hall



Buddha Statue by Enku



Bed Cover Glue Resist Dying Technique



2 Second Folk Craft Hall



Negoro Lacquerware Vase



Umanome(Horse Eye) Plate Stoneware

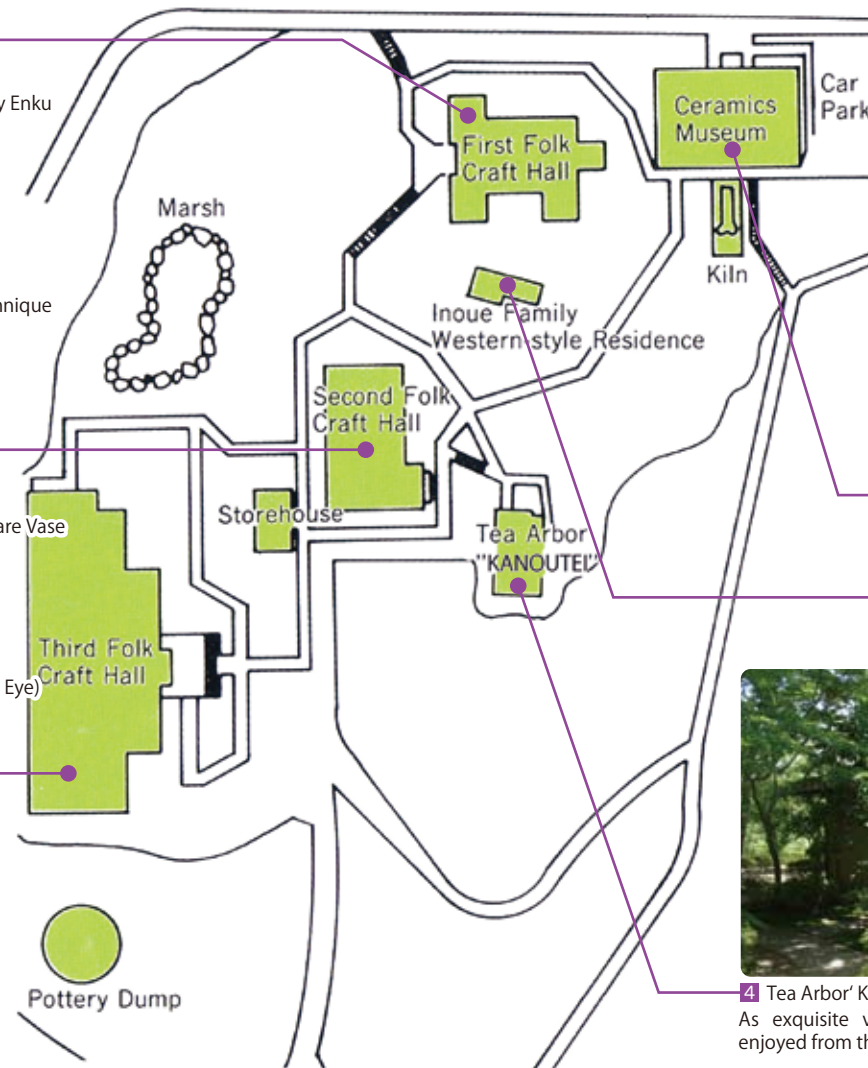


3 Third Folk Craft Hall



Mikawa Clay Dolls

The Third Folk craft Hall was built around the theme of 'Shelter'



Toyota City Folk Craft Museum

In 1981, when the Japan Folk Craft Museum in Komaba, Tokyo was renovated, both the large hall and the study of Soetsu Yanagi, founder of the Japanese Folk Craft Movement, were demolished.

The contents of the rooms were donated to form the basis of the new Toyota City Folk Craft Museum.

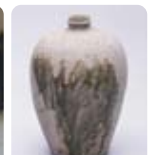
Subsequently, the second Folk Craft Hall, the Tea Arbor, the storehouse, the Western-style Residence, and the third Folk Craft Hall were added.

In accordance with the basic folk craft themes of "Food, Clothing, and Shelter," the First Folk Craft Hall presents articles related to "Clothing", the Second to "Food" and the Third to "Shelter".

Special exhibitions are also held several times a year.



6 Ceramics Museum



Ash glaze Pot



Sue unglazed Bottle



4 Tea Arbor 'KANOUTEI'

As exquisite view of Kanpachikyo can be enjoyed from the Tea room



5 Inoue Family Western-Style Residence

This residence features the only western style architecture of the Meiji era. And in December, 2000, the Inoue Western Residence was designated as a Tangible Cultural Property.