

TEL Japanese: 090-6462-3867 Portuguese: 080-3283-2395

📍 Toyota Koto Shokugyo Kunrenko(1-22-2 Jinnaka-cho, Toyota-City)

🚶 A 13-minute walk from the Toyotashi station on the Meitetsu Toyota Line/
A 13-minute walk from the Shin-Toyota station on the Aichi Loop Line/

9 Intermediate Japanese Class Level Intermediate (persons who can read and write hiragana, katakana and easy kanji and are able to hold daily conversations)

Schedule	Mondays to Fridays, 10:00-12:00, 13:00-15:00
Contents	This class uses textbooks. Program prepares students for the work environment or for the JLPT(N3). Taking a company tour or on-the-job training.
Textbooks	Lending ("Chukyu o Manabou," "Chukyu e Ikou" etc.)*If persons are in need of textbooks, they will have to buy them. The kanji textbook will also have to be bought.
Target	16 to 45 years old (persons who want to learn Japanese for their job/persons who want to be able to stably work in Japan on a long-term basis)
Cost	Free (textbook fee is not included)
Capacity	10 persons
Application	April/August

10 Preparatory Class for JLPT N3 Level Intermediate (persons who can read and write hiragana, katakana and easy kanji and are able to hold daily conversations)

Schedule	Mondays to Fridays, 10:00-12:00
Contents	Preparation for spelling, vocabulary and reading test
Textbooks	"N3 Dokkai," etc
Target	16 to 45 years old (persons who want to learn Japanese for their job/persons who want to be able to stably work in Japan on a long-term basis)
Cost	Free (textbook fee is not included)
Capacity	10 persons
Application	May/October

TEL Japanese: 090-2037-5228 Portuguese: 090-8339-1240

📍 Homidanchi Building 141, Meeting Room 2
(Meeting Room 2, Kodan 141, 5-1 Homigaoka, Toyota City)

🚶 A 15-minute walk from the Homi station on the Aichi Loop Line/
A 2-minute walk from Higashi Homi Kodomoen Mae via the Toyota Oiden Bus on the Homi • Toyota Line

11 HOMIGO, Japanese Class in Homigaoka Level Introductory-Advanced

Schedule	Sundays, 10:00-12:00
Contents	Personalized conversation practice conducted by volunteers to suit applicants' needs
Target	From children to adults
Cost	Annual fee: individual 3,000 yen/family 5,000 yen
Capacity	10 persons
Application	Anytime

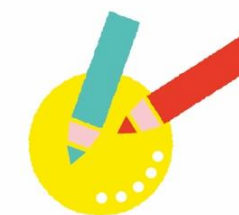


Toyota International association

Toyota International Association



Information on the Japanese Language Classes in Toyota City



Choose Based on Lesson Contents P2

Choose Based on the Schedule P3

Choose Based on the Venue P4-5

The details are on pages 6-8

Toyota International association(TIA)

〒471-0034 1-25 Kozakahonmachi, Toyota City Toyota Industry and Culture Center, 3F

TEL 0565-33-5931

E-mail tia@hm.aitai.ne.jp

FAX 0565-33-5950

WEB http://www.tia.toyota.aichi.jp